



Northwest Territoriesmi

Ihumiurviat  
Malirutaliatigun

MEETING EDE 67-19-21

**STANDING COMMITTEE ON ECONOMIC DEVELOPMENT  
AND ENVIRONMENT**

~

**MONDAY, JUNE 28, 2021**

**COMMITTEE ROOM 'A', LEGISLATIVE ASSEMBLY / TELECONFERENCE  
10:30 A.M.**

---

**AGENDA**

1. Prayer
2. Review and Adoption of Agenda
3. Declarations of Conflict of Interest
4. Public Matters
  - a) Technical Briefing on Cumulative Land Disturbance Framework – Bathurst Caribou Range Plan with the Department of Environment and Natural Resources
5. Adjournment



# **Cumulative Land Disturbance Framework: Bathurst Caribou Range Plan SCEDE Briefing**

June 28, 2021

Government of  
Northwest Territories

# Outline

- Background
  - Bathurst Caribou Annual Range
  - Why was the Range Plan Developed
  - How was the Range Plan Developed
- Bathurst Caribou Range Plan
  - Core Components
  - Management Recommendations
- Implementation progress



# Background - Bathurst Caribou Range



# Background – Why a Range Plan?

- Significant decline in the size of the Bathurst herd
- ‘Threatened’ status under Species at Risk (NWT) Act
- Measures from environmental review processes
- Expectations from Indigenous governments and other co-management partners



# Background – How was it Developed?

- Working Group
  - 21 organizations (IGOs, NGOs, industry, Governments of Canada, Saskatchewan and Nunavut, GNWT Departments of ENR, ITI and Lands)
- Best available science and Indigenous knowledge
- External and interdepartmental engagement conducted



# Bathurst Caribou Range Plan: Core Components

- Overall Goal: Ensure people and activities are managed to maintain the caribou range in a healthy state.
- Four Main Objectives
  1. Make sure the most important parts of the range are not disturbed.
  2. Make sure the herd can move freely throughout the range.
  3. Develop thresholds for human disturbance on the range.
  4. Manage roads and traffic within the range.
- Nine Management Recommendations
- Cumulative Land Disturbance Framework



# Bathurst Caribou Range Plan: Management Recommendations

1. Establish a Cumulative Land Disturbance Framework
2. Support community guardianship
3. Advance habitat conservation – water crossings and land corridors
4. Advance habitat conservation – calving grounds and post-calving range
5. Use mobile caribou conservation measures
6. Develop effective road planning and management
7. Use compensatory mechanisms to make up for impacts
8. Link to wildfire management practices
9. Use online staking





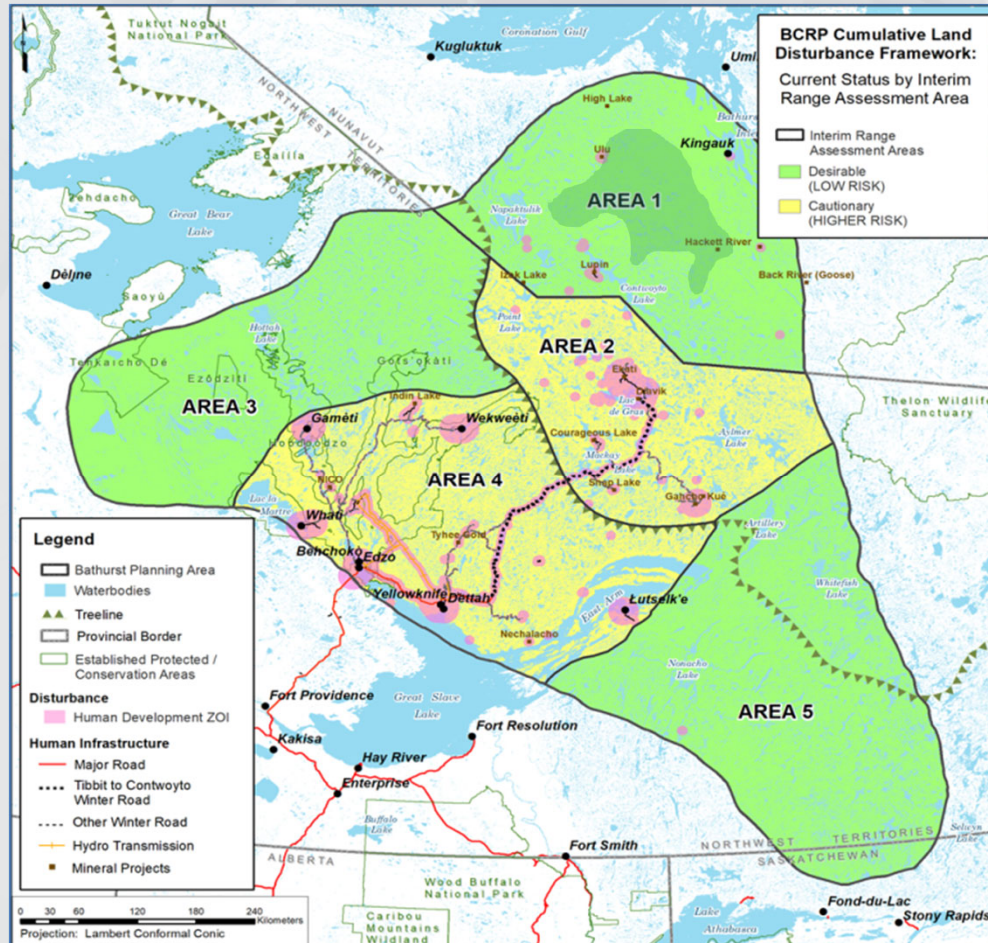
# Bathurst Caribou Range Plan: Cumulative Land Disturbance Framework

- **CLDF:** Important tool to identify and manage habitat disturbance on the Bathurst Caribou range
- **Range Status:** The framework establishes 3 categories of cumulative land disturbance: *Healthy*, *Cautionary*, *High Risk*
- **Management Responses:** The framework matches the management response to level of cumulative land disturbance

| Range Status      | Management Response   |
|-------------------|---|
| <b>High Risk</b>  | <b>Intensive:</b><br>Restore active disturbance to below threshold level prior to new disturbance.  |
| <b>Cautionary</b> | <b>Enhanced:</b><br>Increased requirements for type and amount of basic management level tools.   |
| <b>Healthy</b>    | <b>Basic:</b> <ul style="list-style-type: none"> <li>• Community Guardianship</li> <li>• Habitat Conservation</li> <li>• Road Planning/Management</li> <li>• Offset / Compensatory Mechanisms</li> <li>• Wildfire &amp; Fuels Management</li> <li>• Online Staking</li> </ul> |



# Current Disturbance Status of the Bathurst Range



**64% Healthy**  
(Areas 1, 3 & 5)

**36% Cautionary**  
(Areas 2 & 4)

**0% High Risk**



# Cumulative Land Disturbance Framework - Progress

- Inventory of Landscape Change annual updates
  - Tracks levels of disturbance
- Species and Habitat Viewer
  - Website showing disturbance level in relation to thresholds
  - Can add new potential disturbance to see how it influences total amounts



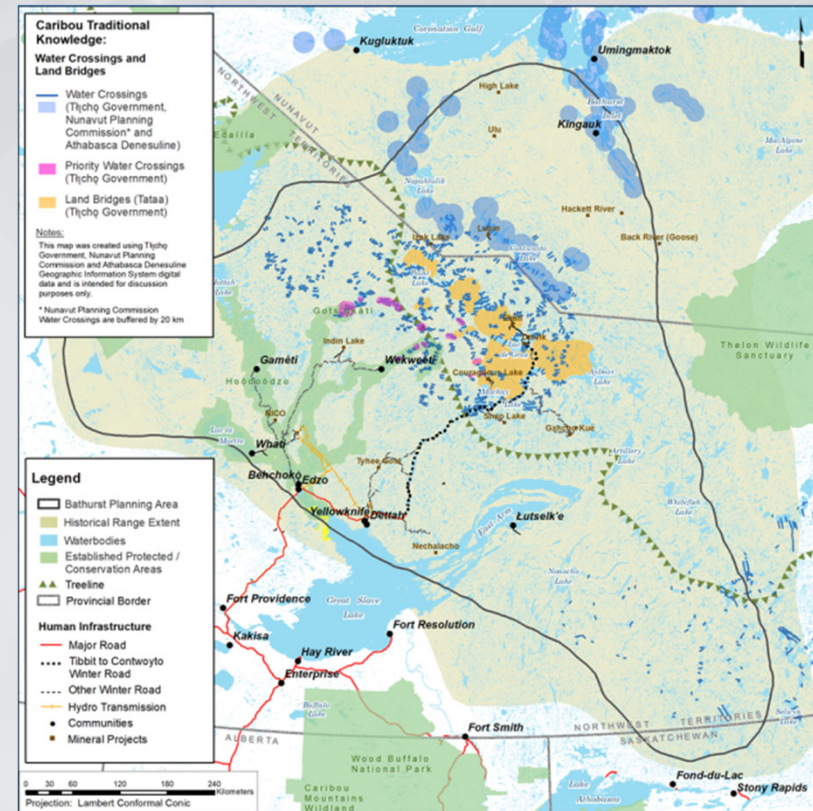
# Community Guardianship

- Coordinated network of community monitoring programs across the Bathurst caribou range
- Implementation Progress:
  - Polar Knowledge Canada funding
  - Following the Indigenous Guardianship Toolkit
  - Learning from successful programs elsewhere



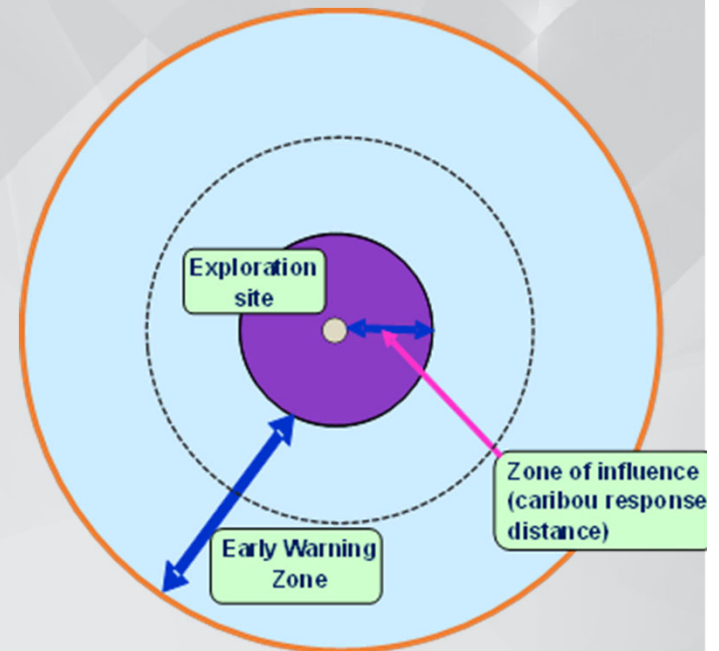
# Habitat Conservation

- Advance habitat conservation in areas of important caribou habitat
  - Key water crossings or land corridors
- Implementation progress:
  - Four workshops
  - Support to IGOs



# Mobile Caribou Conservation Measures

- Flexible tool to reduce sensory disturbance
  - Progressive reduction of project activities
  - Distance and number of caribou will trigger responses
- Implementation progress:
  - GNWT Implementation Framework Document
  - Operation Guidance
  - 2020 desktop pilot; 2021 onsite Pilot

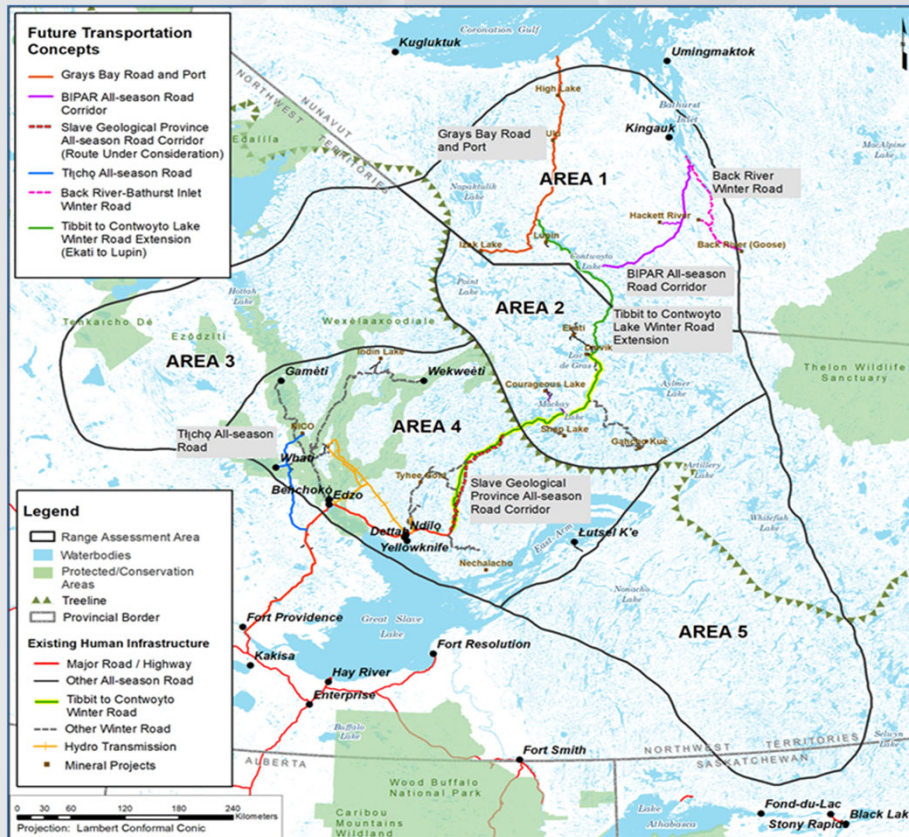


# Compensatory Mechanisms

- A way to make up or compensate for impacts
  - Restoration
  - Support for research or guardian program
- Implementation progress:
  - Report on Implementation Options
  - GNWT Guidance Document on Offsetting for caribou
  - Finalizing Offsetting Plan for TASR



# Road Planning and Management



- Basic measures (healthy)
- Enhanced measures (Cautionary)
- Progress on Implementation:
  - Contract to document best practices and options for mitigating impacts
  - Masters project
  - prep for LASR development





# Summary of Implementation Progress

- Cumulative Land Disturbance Framework
  - Annual updates of Inventory of Landscape Change
  - Species and Habitat Viewer
- Habitat Conservation
  - Funding for IGOs to work with elders/harvesters/community members
  - Four workshops
- Caribou Guardian Coalition
  - Three years external funding
  - Three workshops; another planned for fall
  - Developed vision, objectives, ToR, support materials



# Summary of Implementation Progress (cont.)

- Mobile Caribou Conservation Measures
  - A Framework and Operation Guidance Document
  - Another pilot in fall 2021
- Compensatory Mechanisms
  - Implementation Options report
  - GNWT Guidance document
  - TSAR offsetting plan
- Road Management and Planning
  - Document best management practices and mitigation options



Thank you!

