















































































  
AURORA























































































FOR PROPER  
PERFORMANCE PA  
MUST BE INSTA  
ACCURATE ME  
NAME  
INFORM





































































































FOR MORE INFORMATION, CALL  
1-800-648-6893

SPACE PANELS  
1/8 INCH AT ENDS  
1/8 INCH AT EDGES  
APA CUSTOMER SUPPORT  
1-253-620-7400

THIS SIDE DOWN  
EST. LADG. ABALO  
MADE IN CANADA

STRENGTH AXIS  
↑  
DIRECTION  
↓

**APA**

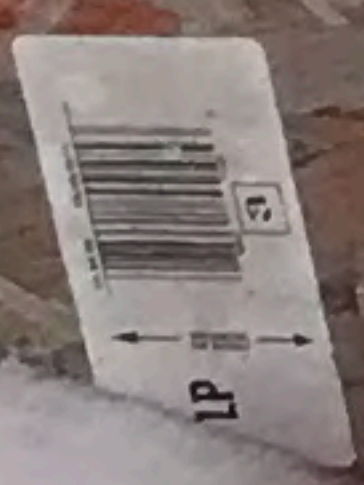
**RATED EXTERIOR**  
RATED 2 1/2" **OSB**  
CLASSIFIED FOR SMOKE  
EXPOSURE 1 hr  
510

FOR 2-4' JOISTS  
S/S CATEGORY

CONSTRUCTION SHEATHING  
3/8" R24/W2  
3/8" R18/W2  
3/8" R12/W2  
3/8" R6/W2  
3/8" R3/W2

EXTERIOR ADHESIVE

SEE TECHNICAL  
MANUAL FOR  
DIRECTIONS



































**APA**  
 RATED SHEATHING  
 24/70  
 5/8" THICK  
 48" X 96" SHEETS  
 1/8" GAP AT EDGES  
 1-253-620-7400  
 THIS SIDE FROWN  
 ESTE LADO ABAJA  
 MADE IN CANADA  
 STRENGTH AND  
 FIRE DIRECTION

1-253-620-7400  
 THIS SIDE FROWN  
 ESTE LADO ABAJA  
 MADE IN CANADA  
 STRENGTH AND  
 FIRE DIRECTION

**APA**

JULKO  
 MADE IN CANADA

























SeaHorse  
outboard

MARINER  
30





Seahorse

let

MARINER

25

ULTRA-LOW













25  
Evinrude

MARINER  
30

25

25

Evinrude  
25









EVINRUDE  
25













































R-20  
R-19 RSI-3,1  
R-12 RSI-2,10  
R-10 RSI-1,9  
R-8 RSI-1,4  
R-6 RSI-1,0  
R-4 RSI-0,7  
R-2 RSI-0,35

5433  
56857  
GREENGLASS

ISOLANT ROSE FIBERGLAS  
Le meilleur choix pour des économies d'

Installation Instructions for PINK FIBERGLAS® Insulation for 2x6 Walls

1. Cut the insulation to fit the wall cavity.
2. Push the insulation into the wall cavity.
3. Press the insulation against the wall.
4. Trim the insulation to fit.
5. Repeat for the next wall.

OWENS CORNING  
ISOLANT ROSE FIBERGLAS  
Le meilleur choix pour des économies d'

Installation Instructions for PINK FIBERGLAS® Insulation for 2x6 Walls

- 1a. Cut the insulation to fit the wall cavity.
- 1b. Push the insulation into the wall cavity.
- 1c. Press the insulation against the wall.
2. Trim the insulation to fit.
3. Repeat for the next wall.





**R-12 RSI-2,10**  
Largeur 584 mm / 23 po  
Longueur 1194 mm / 47 po  
Épaisseur 89 mm / 3 1/2 po  
Résistance thermique 2,10  
11,84 mètres carrés / 128,1 pieds carrés

**OWENS CORNING**  
**ISOLANT ROSE**  
Le meilleur choix pour des économies d'énergie  
**Ecotouch**

- Installation Instructions for PINK® FIBERGLAS® Insulation for 2x6 Walls
1. Prepare the wall surface.
  2. Cut the insulation to fit.
  3. Push the insulation into the cavity.
  4. Trim the insulation.
  5. Seal the joint.

**OWENS CORNING**  
**ISOLANT ROSE**  
Le meilleur choix pour des économies d'énergie

- Installation Instructions for PINK® FIBERGLAS® Insulation for 2x6 Walls
1. Prepare the wall surface.
  2. Cut the insulation to fit.
  3. Push the insulation into the cavity.
  4. Trim the insulation.
  5. Seal the joint.

**Murs 2x6 Greniers**



**R-19 RSI-3,35**  
Largeur 584 mm / 23 po  
Longueur 1194 mm / 47 po  
Épaisseur 152 mm / 6 po  
Résistance thermique 3,35  
11,16 mètres carrés / 120,1 pieds carrés

**DES AVER**  
NATURAL  
DE PAR  
C  
DE  
RECHETS



















































































































































































Canada

Blue smartphone









Canada





























CS 9924  
EXT 10





R. 100  
CS 932  
EXTRA  
DYES













































ATTENTION: TO BE USED FOR INTERIOR APPLICATIONS ONLY. DO NOT USE FOR EXTERIOR APPLICATIONS. SEE INSTRUCTIONS FOR PROPER INSTALLATION. CONTACT US AT 1-800-848-6838 FOR MORE INFORMATION. © 2011 OMS. MADE IN CANADA.

2 1/2" x 4" x 1/2" OSB  
2416  
OSB  
2416  
OSB

OSB  
2416  
OSB









































**Mobil**  
UNIVIS N-C 22  
Premium Quality Hydraulic Oil  
Huile hydraulique de haute qualité  
20 LITRES

**MB**  
PUZZLE  
CHOKLEY  
PUZZLE 500

THL  
FS 550











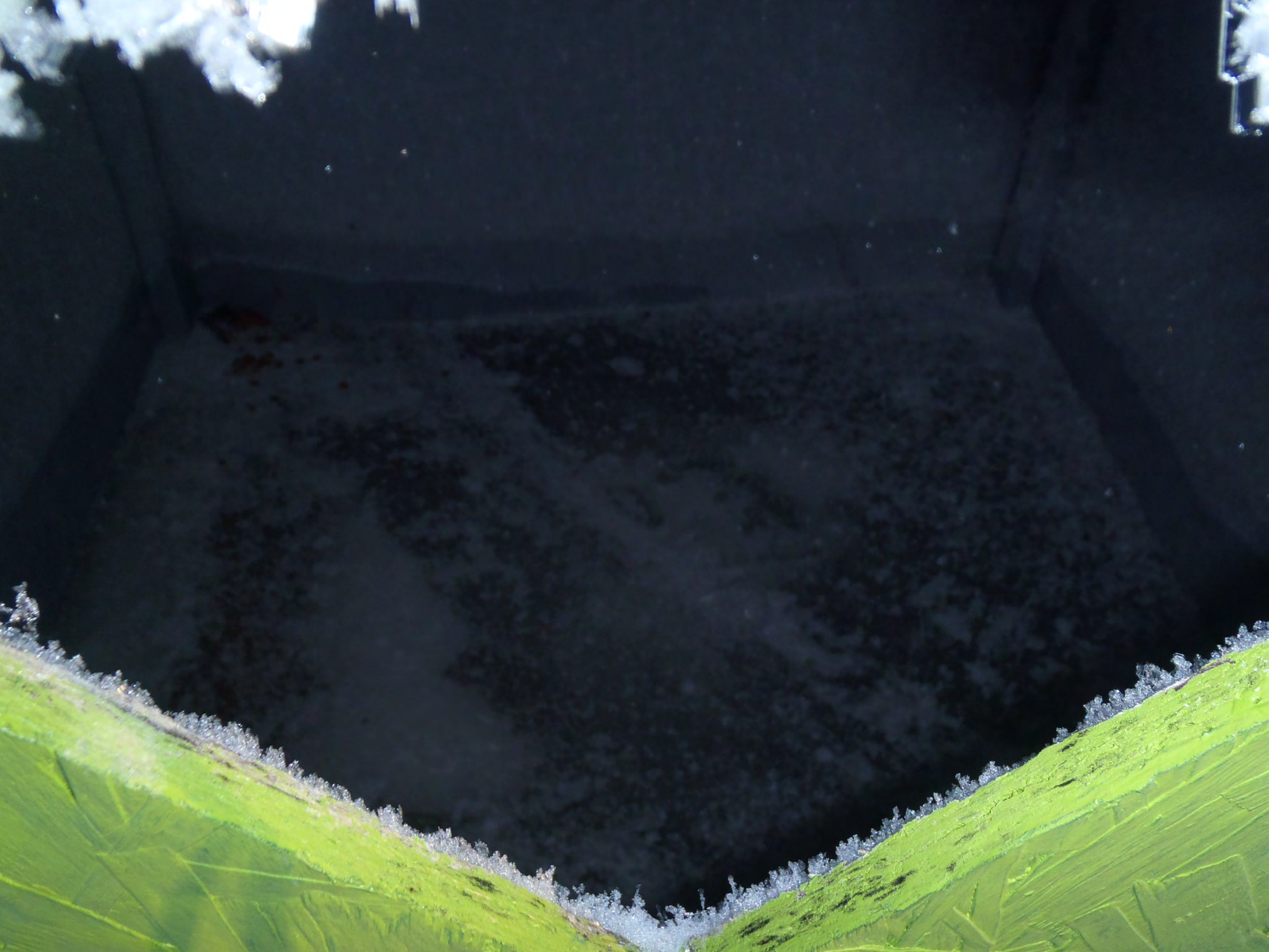




























Mobil  
22 UNIVIS N-C  
Premium Quality Hydraulic Oil  
Huile hydraulique de haute qualité

20 LITRES

CROQUET PUZZLE 500  
MB PUZZLE





**Mobil**  
**UNIVIS N-C**  
**22**

Premium Quality Hydraulic Oil  
Huile hydraulique de haute qualité

20 LITRES

THL  
FS 550

























































DUMPS





























